

Job of Remote-Data-Transmission (RDT)

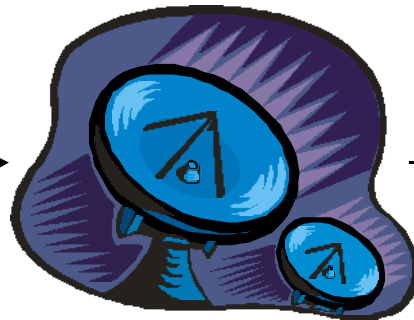
- Save and fast transmission of Measured data from the measurement point to the centre

Measuring Point

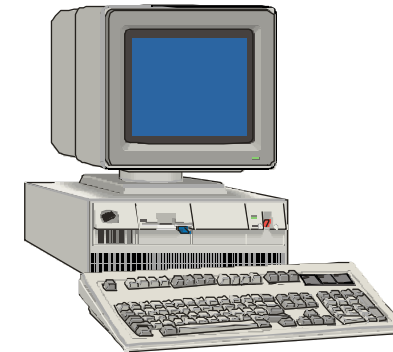


EK-86/87/88/90, TC-90,
DS-100, DL240, EK260

Media



Centre



Types of data transmission

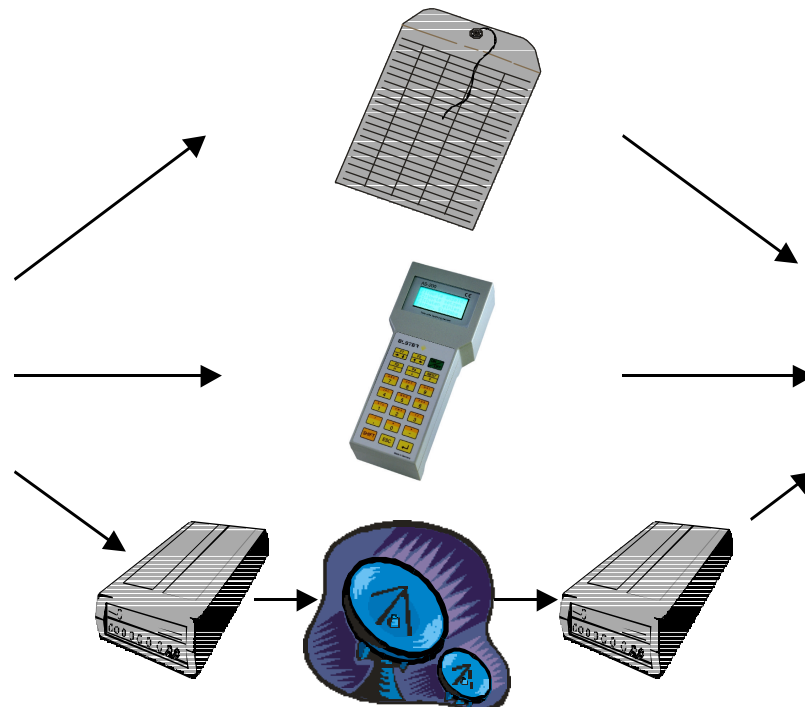
- Write meter-reading on paper (Reader-list)
- Mobile data-reading electronically on site (MDR)
- Remote data-transmission (RDT)

Measuring point

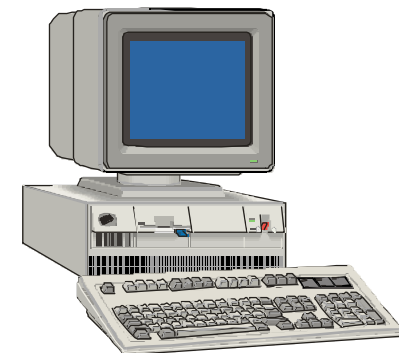


EK-86/87/88/90, TC-90,
DS-100, DL240, EK260

Media



Centre



Advantages of electronic reading (MDR or RDT vs. Reader-list)

- Save transmission (errors during reading on site will be avoided)
- Possibility to read additional data (e.g. load-profiles)
- Additional information available (e.g. Device-No., Customer-No.)
- Interface for further evaluation on PC (WinLIS)

Additional advantages when using Remote data transmission (RDT vs. MDR)

- Fast data transmission
- No need to be on site for reading of data
- Automatic data transmission during the night or on weekend possible

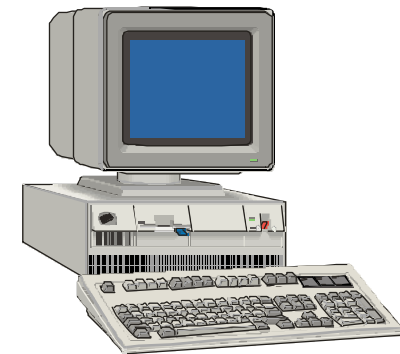
Remote Data Transmission with LIS-100



Reading out Meter-Readings, Load-Profiles
and Customer Information



Codemarke, Reader name, Date/Time
adjustment (max. +/-30 min)



EK-86/87/88/90,
TC-90, DS-100

PC with Control-
Centre Software
LSM-100



Spontanmeldung und Fernschalten nur möglich in Verbindung mit
Datenkonzentrator DKM-100. Spontanmeldung dabei als FAX an einen
FAX-Empfänger.

Remote Data Transmission with LIS-200-System

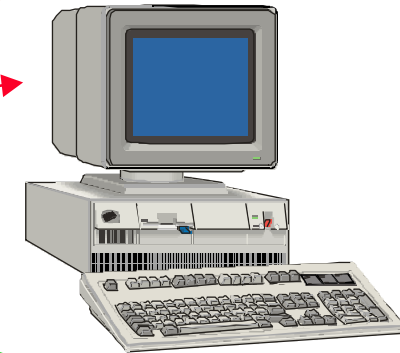


Reading of Monthly-, Interval and Calculated Archives

Set parameters, Set digital outputs

Spontaneous message SMS

Spontaneous message SMS



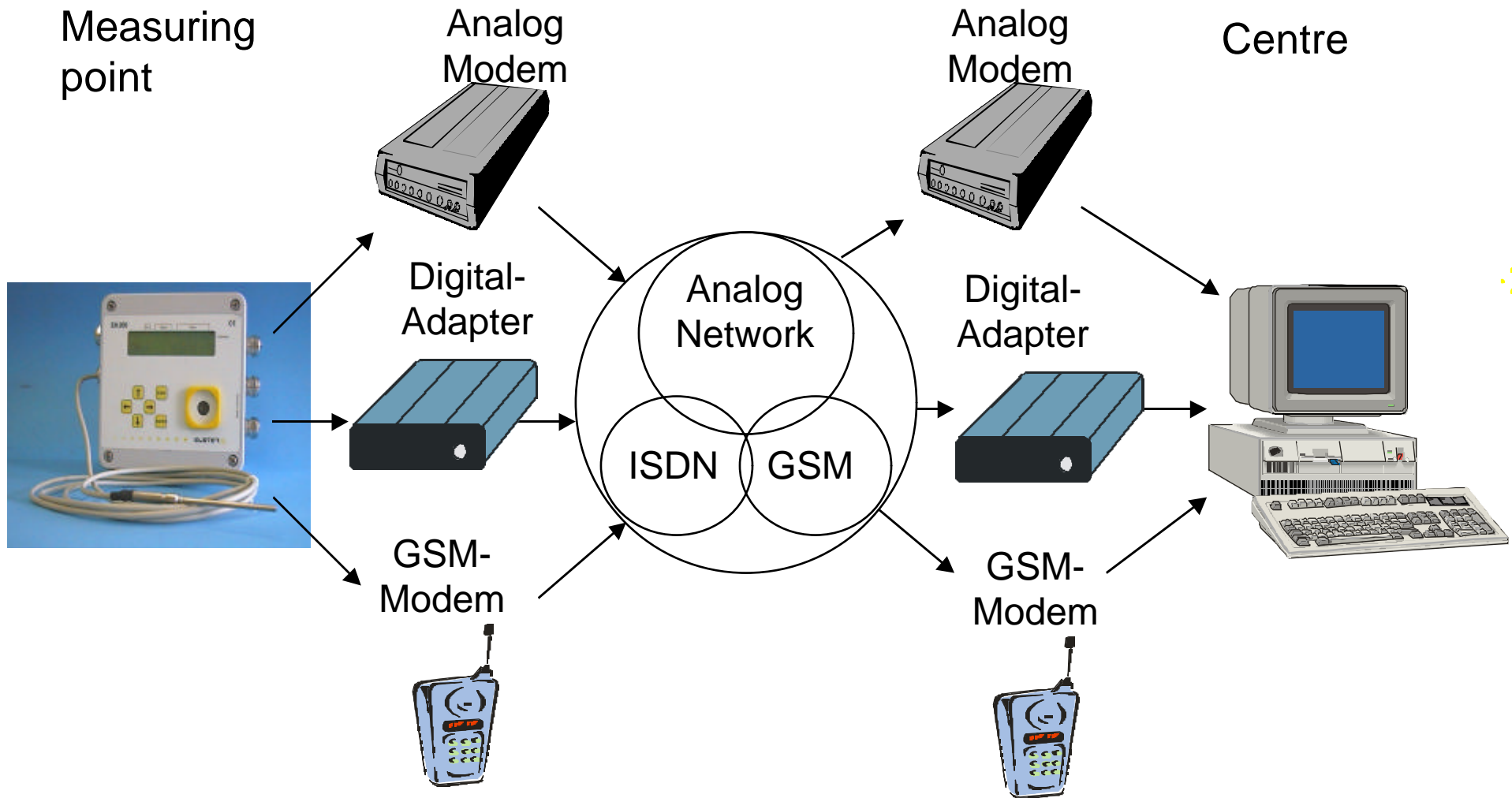
PC with **WinCOMS** and **WinPADS240** and optional **SMS-Software**



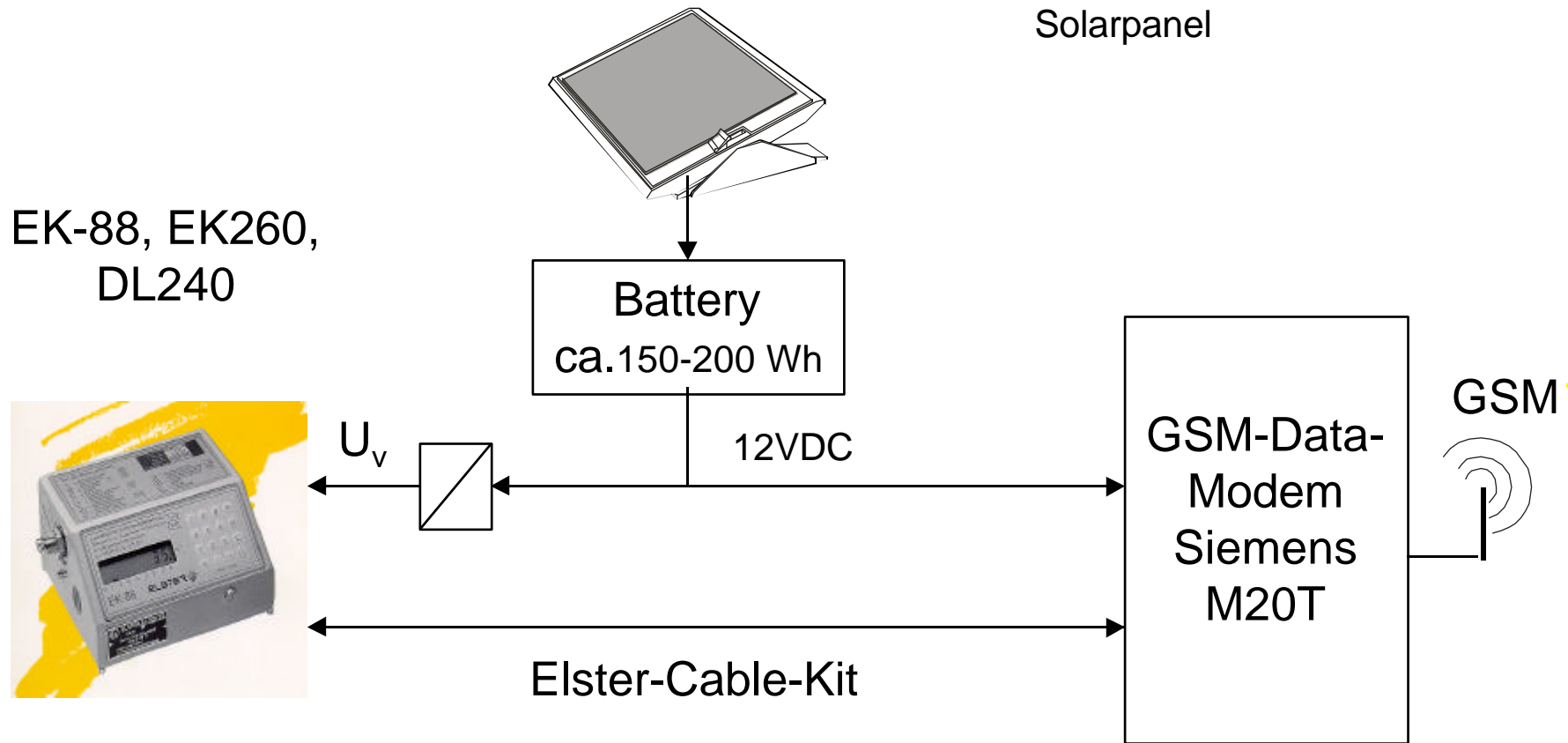
SMS Cellular Phone

DL240 with integrated or external Modem; **EK260** with external modem

Available networks for Remote Data Transmission



Solar-powered Station with GSM-Modem



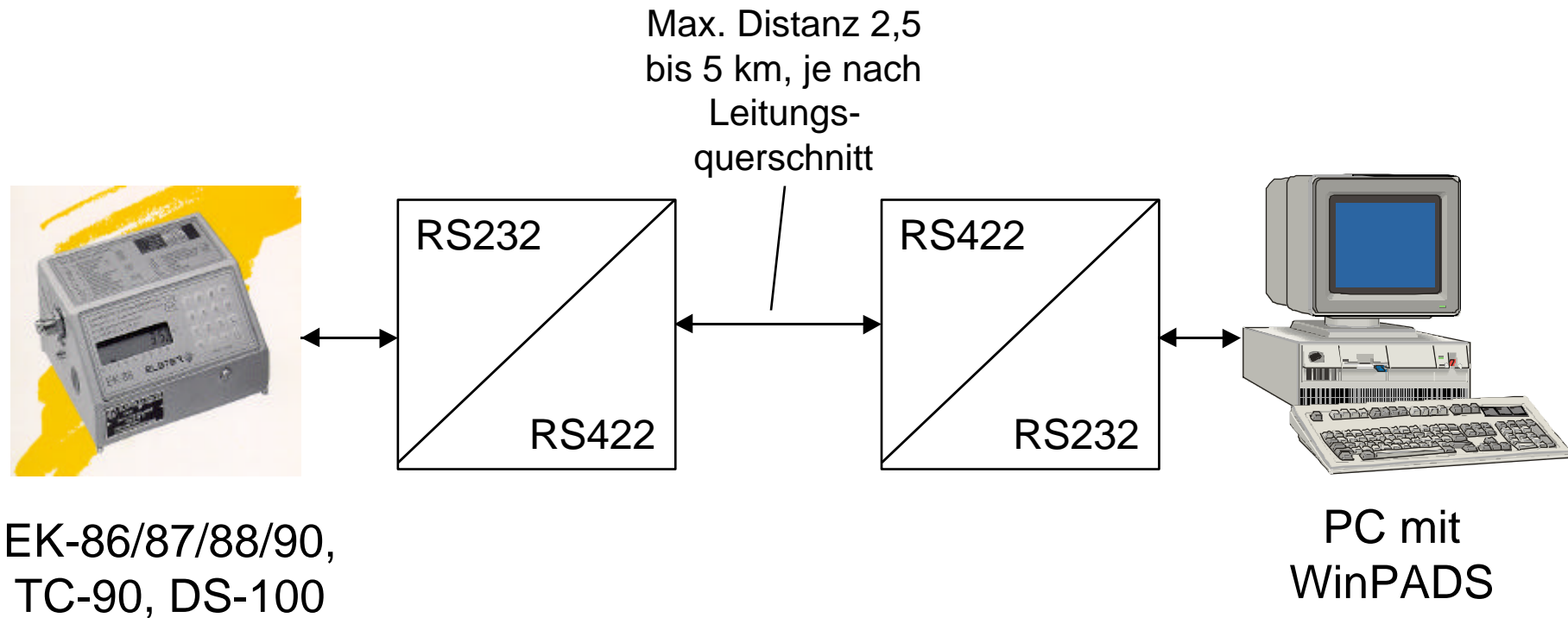
U_v for EK-88: 7...13 VDC

U_v for EK-260: 10 VDC

U_v for DL240: 5 VDC

Example: EK-88, Siemens M20T, 170Wh-Battery:
Supply-time: app. 10 days stand-by, app. 4 days active

Data Transmission via RS422-Interface



Elster-Produkte für Datenfernübertragung im Überblick

Im LIS-100-System:

- ☑ **Endgeräte:** alle Endgeräte können einfach für DFÜ nachgerüstet werden (DS-100, EK-86/87/88/90, TC-90)
- ☑ **Modems:** EM-100, DKM-100, Modem-Kit
- ☑ **Abrufzentrale:** LSM-100 für Datenfernabruf, AWS-100 oder WinLIS für Datenverarbeitung und -auswertung

Im LIS-200-System:

- ☑ **Endgeräte:** alle Endgeräte können einfach für DFÜ nachgerüstet werden (DL240, EK260)
- ☑ **Modems:** Wahlweise Standard- oder Industriemodem im DL240 integriert, handelsübliches Hayes-kompatibles externes Modem am EK260
- ☑ **Abrufzentrale:** WinCOMS für Datenfernabruf, WinLIS für Datenverarbeitung und -auswertung, WinPADS240 für Parametrierung