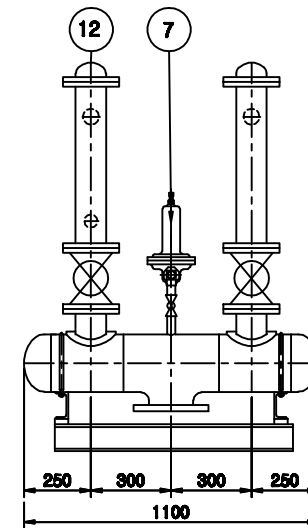
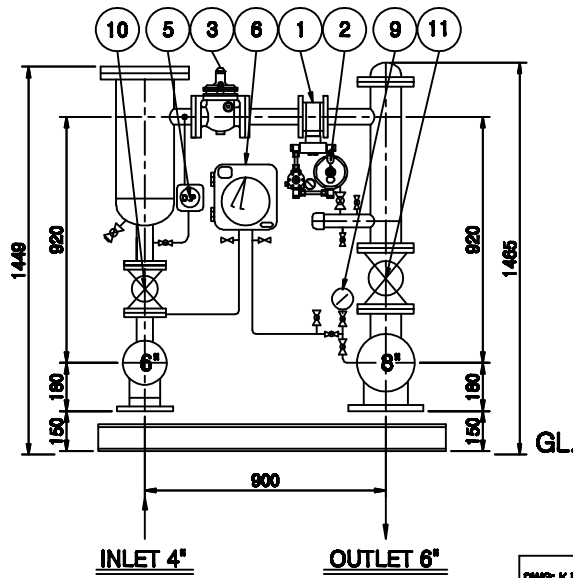
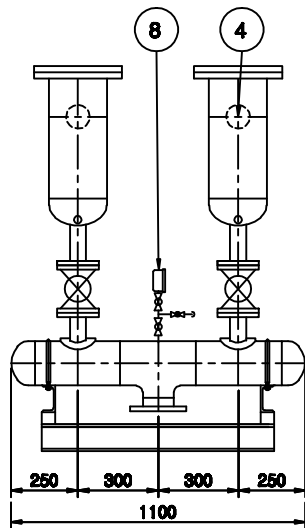


| NO | DESCRIPTION | SIZE | Q'TY | REMARKS |
|----|---------------------------|------|------|---------|
| 1 | A.F.V (ANSI300#) | 2" | 2 | A. M. C |
| 2 | HARNOREG PILOT | 3/4" | 2 | I. G. A |
| 3 | S.B.V (B) | 2" | 2 | JEAVONS |
| 4 | FILTER (32.0, HQAS, 1MPa) | 3" | 2 | SE JONG |
| 5 | D.P GAGUE (0-70KPa) | 1/4" | 2 | SE JONG |
| 6 | RECORDER (1-0.1MPa, 7D) | 2PEN | 1 | SE JONG |
| 7 | J48KH RELIEF | 1" | 1 | JEAVONS |
| 8 | PRESSURE GAUGE (0-1MPa) | ∅100 | 1 | WOO JIN |
| 9 | PRESSURE GAUGE (0-0.1MPa) | ∅100 | 1 | WOO JIN |
| 10 | BALL VLAVE (1MPa) | 2" | 2 | K. P. C |
| 11 | BALL VALVE (1MPa) | 4" | 2 | K. P. C |
| 12 | TURBO FUSER | 4" | 2 | SE JONG |



| DWG: K.K.S | PROJECT TITLE | DATE | SCALE | P/SCALE | DWG NO. |
|------------|---------------|-------------|--|---------|---------|
| DES: | REVISION | DWG DES CHK | 2002. 10. 14 | 1/10 | A-2 |
| CHK: | | | TITLE APV-22FM-N-4B GOVERNOR STATION | | |
| APPX: | | | 世宗エンジニアリング株式会社 SEJONG-ENG CORPORATION | | |